

FILINTEST II

PORTABLE ANALYSIS SYSTEM



Filterability means efficiency. **FILINTEST II** is a portable analysis system for wines, spirits, juices, water and liquids in general. The system carries out:

- **Filterability test**

The Filterability test checks the filterability of your liquid: carried out at a constant pressure, the test lets the liquid flow through the membrane and reach the 600 cc level, while recording the timestamp for the 200, 400 and 600 cc levels. After reaching the final 600 cc level, a computation is carried out to get the value of the three filterability indexes: IF, IFM and VMAX. Based on these three

indexes, which must lay in predefined intervals, you will get the filterability test result: successful or failed.

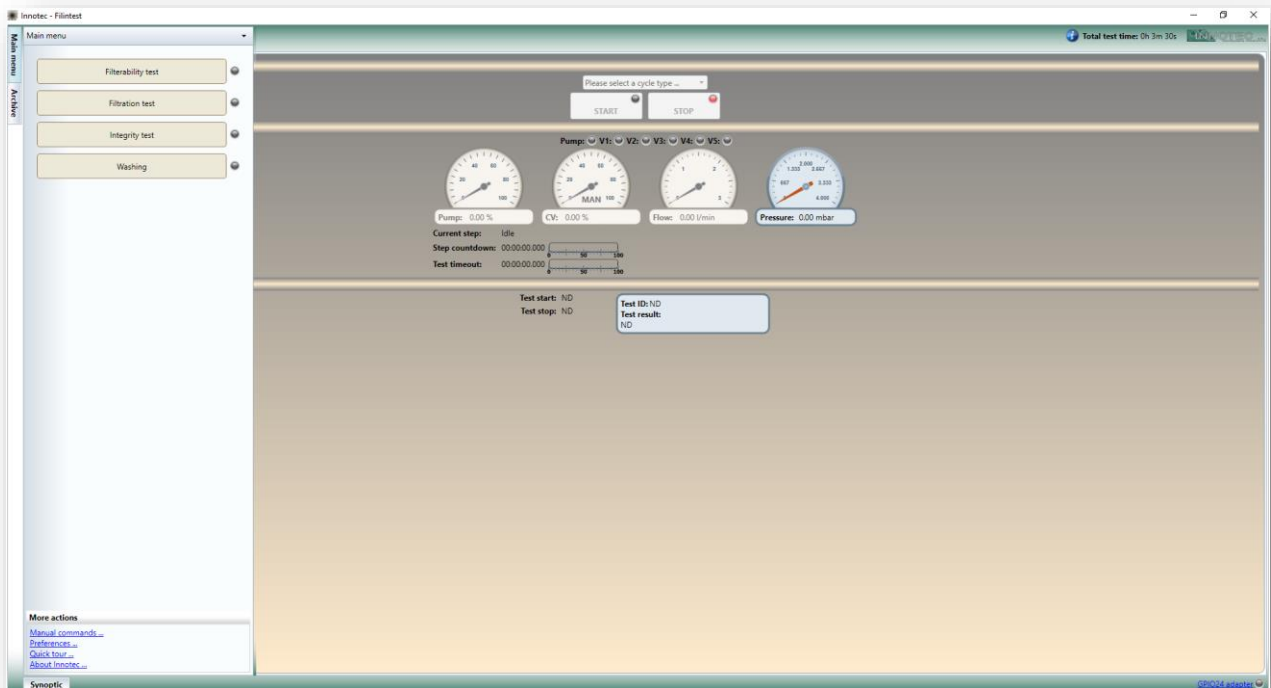
- **Filtration test**

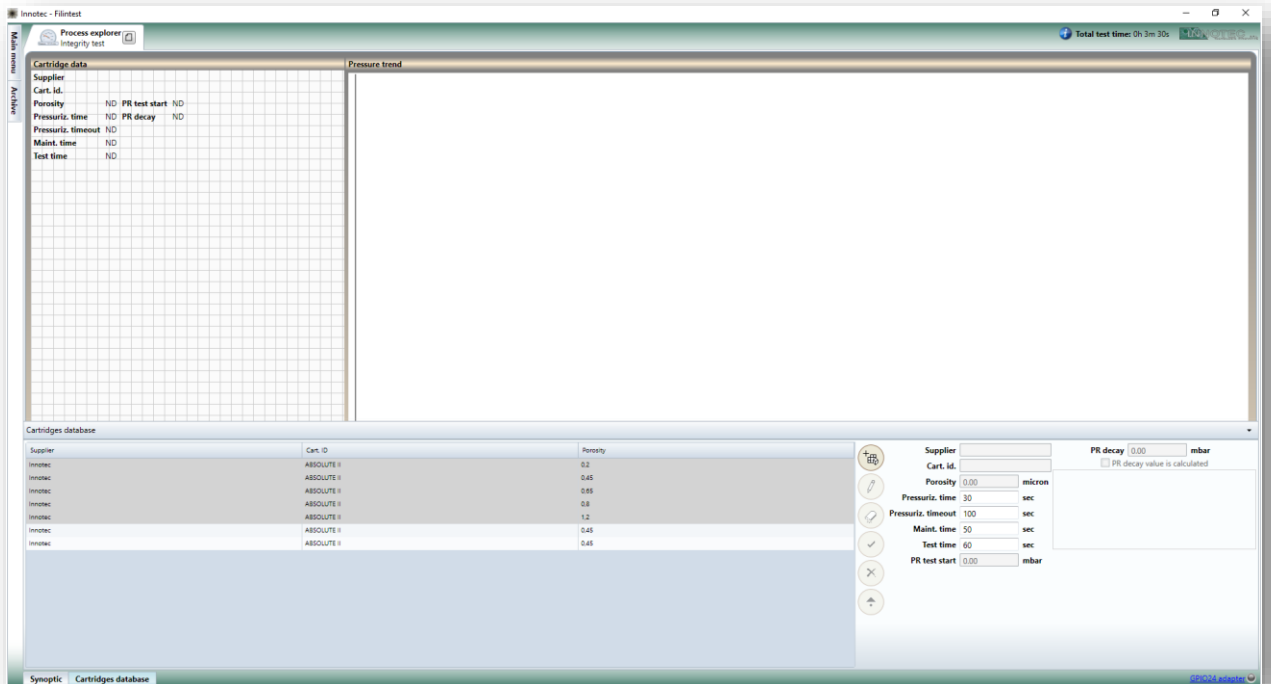
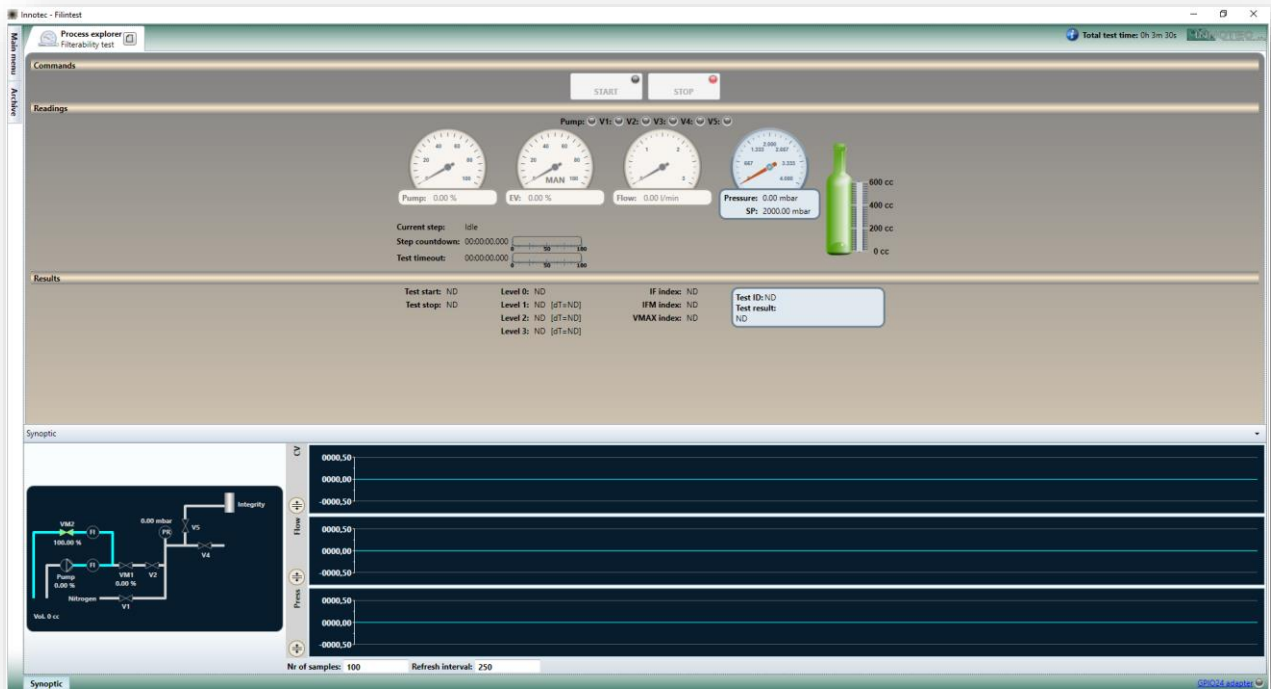
The Filtration test is a real filtration: the test lets the liquid flow through the connected filter media sample at a constant flow until the pressure sensor reaches a predefined value.

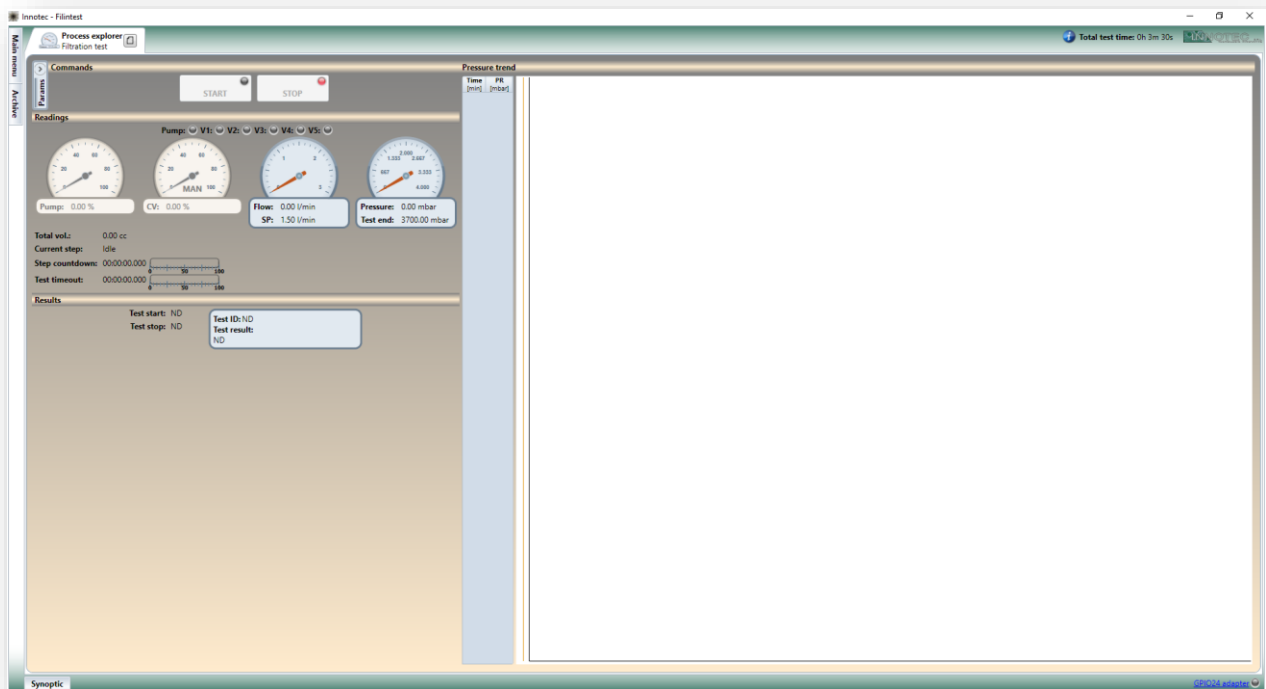
While the liquid is flowing, the pressure values are sampled and a pressure trend is plotted against time.

- **Integrity test**

The Integrity test is the test you use to check the integrity of your membrane cartridge: an automated process is carried out to check if your membrane cartridge may be still used or not and is possible to know the pressure decay. FILINTEST II gives the possibility of testing for all the filtering elements available on the market, without limitations and accepting the data referred to the tests on a data base that can be freely filled out by the user.







The system automatically performs all the tests as well as the washing and sanitizing operations.

It processes the data, stores the data collected, provides the final report with the results.

User, in this way, can easily evaluate if the tested liquid is economically suitable for the industrial filtration process.

FILINTEST II includes the portable case, PC with the specific software and remote connection service, essential accessories to perform the test such as pipings, membrane holder, first membranes supply. The practical portable case makes **FILINTEST II** an independent system for the analysis both in lab and in process line.

Product data sheet

| | |
|------------------------------|--|
| Model | FILINTEST II |
| Construction material | Techno polymers |
| Technical description | FILINTEST II automatically performs the filterability test, as well as the filtration test and integrity test of cartridges. |

| FILINTEST II | |
|---------------------|--------------------------------|
| Features | |
| Weight | 15 kg |
| Dimensions | 47cm x 38cm x 23cm (H x W x D) |
| Power Supply | 230 Vac |
| Liquid pressure max | 4 bar |

| PC | |
|------------------------|------------|
| Features | |
| Processor manufacturer | HP |
| Operating System | Windows 10 |
| Filintest II software | Included |